



Old Spice Rogaine

3rd October 2009
Spring 12 Hour

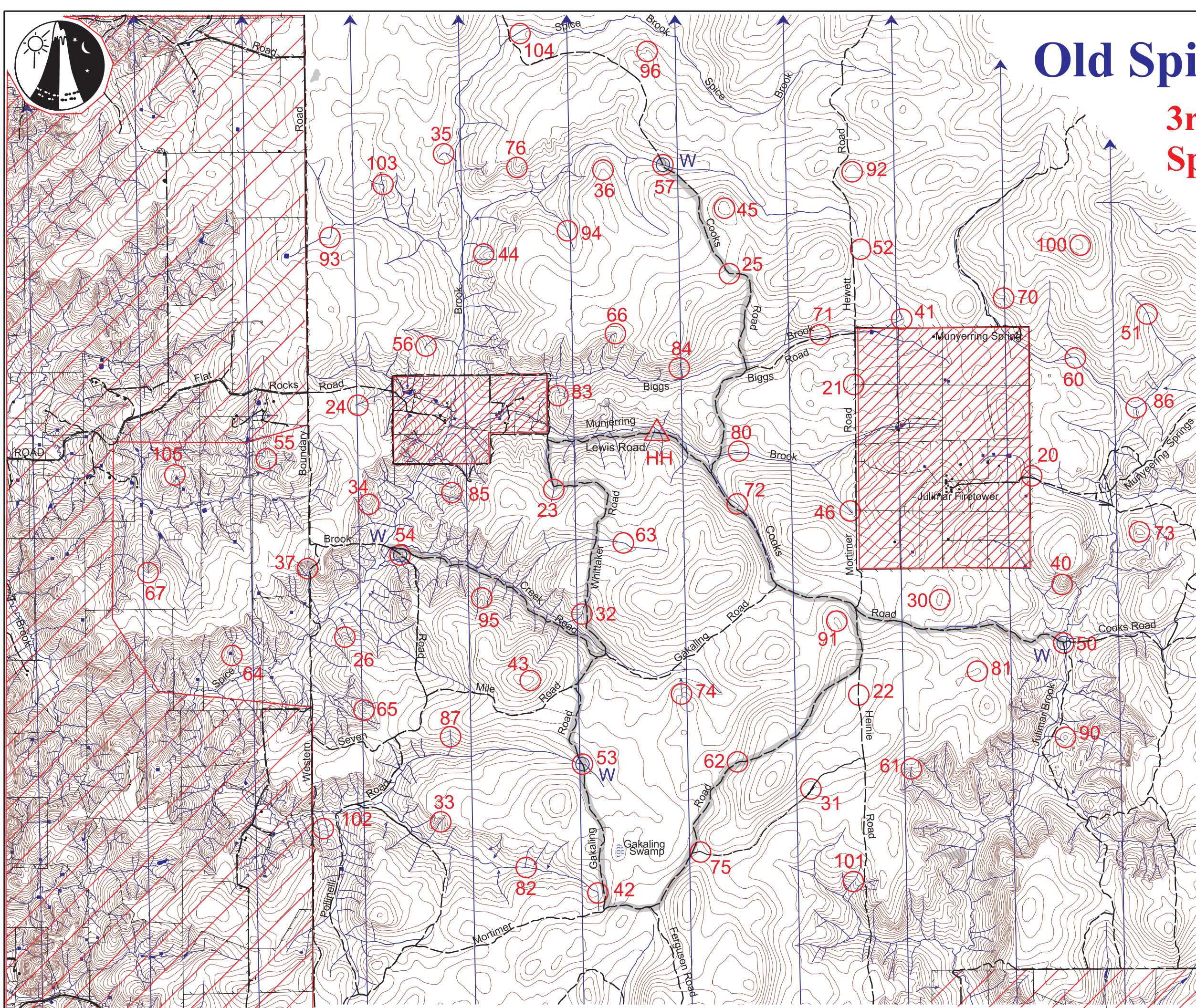


Legend
 SCALE 1:50,000, 5 metre contour interval
 0 1km 2km 3km

- Buildings & Tanks
- Continuations
- Contours
- Control
- Dams
- Fence
- Forest-Farm Boundary
- Hash House
- Magnetic North
- Out-of-bounds
- Patrolled Road
- Road, Major Unsealed
- Road, Unsealed
- Road, Track
- Rock Surface/Rocky Clearings
- Watercourse
- Water Drop

Setters and Veters
 Paul Szijarto Colin Kelly
 Bill Baxter Andy Molnar

Thanks to Property Owner
 Eric Huupponen
 and Farm Manager



This map was produced using OCAD 9 by the Western Australian Rogaining Association, wa.rogaine.asn.au. Data supplied by Landgate and used under copy licence 393/93. Possession of this map does not give right of entry to this area.

Old Spice Rogaine

Western Australian Rogaining Association

3rd October 2009

No	Description	Points	No	Description	Points	IMPORTANT INFORMATION
20	The Watercourse / Fence Junction	20	63	The Broad Gully	60	
21	On the track	20	64	The Dam (S E edge)	60	Control Cards
22	On the Track	20	65	The Knoll	60	9:30 Saturday
23	The Water Course	20	66	Head of the Watercourse	60	
24	Head of the Watercourse	20	67	Head of a Watercourse	60	Briefing
25	Track Bend	20	70	The Gully	70	9:45
26	The Spur	20	71	The Watercourse	70	
30	The Knoll	30	72	The Watercourse	70	Start
31	On a track	30	73	The Knoll	70	10:00
32	The Watercourse	30	74	Head of the Watercourse	70	
33	The Watercourse	30	75	A track bend	70	Finish
34	The Spur	30	76	The Spur	70	22:00 (10:00 pm)
35	Watercourse bend	30	80	the Watercourse (northern side)	80	
36	The Spur	30	81	The Eastern Knoll	80	Hash House
37	The Gully	30	82	The Watercourse	80	16:00 (4:00pm)
40	The Spur	40	83	The Spur	80	
41	Watercourse Bend	40	84	Head of the Watercourse	80	Sunset
42	Watercourse Bend	40	85	The Spur	80	18:19
43	The Summit (Eastern edge)	40	86	The Watercourse Junction	80	
44	The Spur	40	87	The Watercourse	80	Moonrise
45	The Knoll	40	90	The Knoll	90	17:31
46	The Watercourse	40	91	The Knoll	90	
50	Track Junction..... Water	50	92	The Knoll	90	Moonset
51	The Watercourse	50	93	Watercourse Bend	90	4:55
52	The Broad Saddle	50	94	The Watercourse	90	
53	Track / Watercourse Junction ... Water	50	95	The Spur	90	Late penalty
54	The Knoll..... Water	50	96	The Spur	90	10 points per minute or part minute
55	The Spur	50	100	The Knoll	100	Late
56	Head of the Watercourse	50	101	The Watercourse	100	No points if 30 minutes late
57	Track / Watercourse Junction..... Water	50	102	The Spur	100	
60	The Watercourse Bend	60	103	The Watercourse Junction	100	
61	Head of the Watercourse	60	104	The Watercourse	100	Controls used 66
62	On theTrack	60	105	Head of Gully	100	Total Points 3900

Water drops 50,53,54,57

If you are injured make your way to a water drop or patrolled Road and wait.

Patrolled roads
As marked on the map